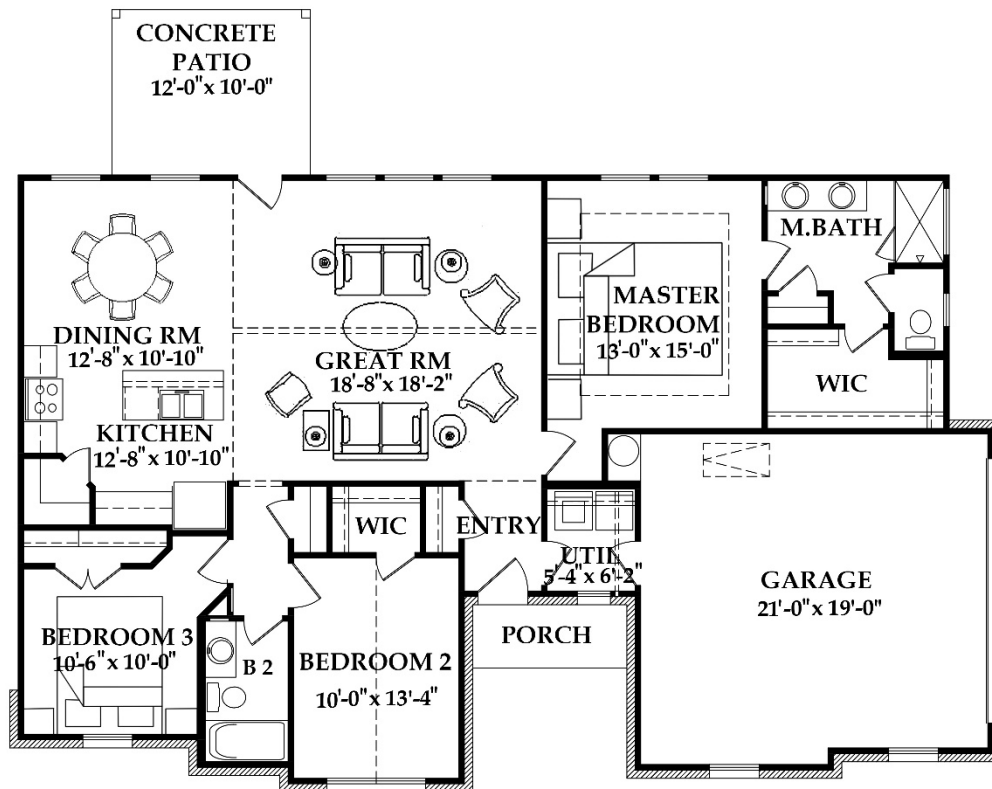




STOCKDALE at ALANNA HEIGHTS

1,546 SF: 3 bedrooms, 2 baths, 2-car garage with 12' x 10' concrete



Renderings and floor plans are conceptual; square footage is approximate and based upon architectural design; area may vary according to construction. Prices, plans, and materials are subject to change without notice.
Rev. 03.19.2024

15600 San Pedro, Suite 101 • San Antonio, Texas 78232
210.493.5082 phone

